

The new RX 60 – breaking the performance barrier

BEST IN CLASS FORKLIFT COMPARED TO ELECTRIC FORKLIFT TRUCKS

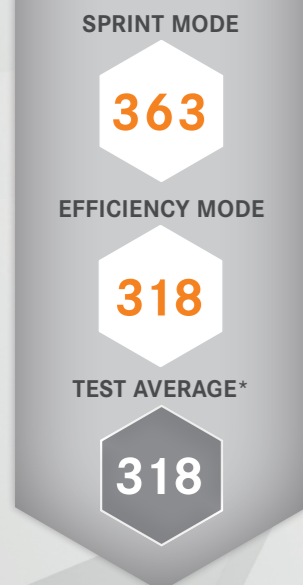


“Still is setting new standards in the electric counterbalance truck segment with the high-performance model in its RX60 series. **Never before in our long test history has a forklift with an electric drive been so productive.**“

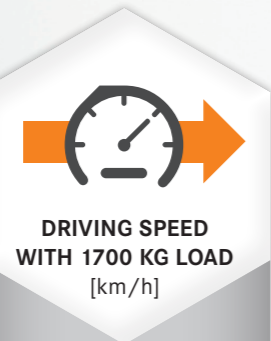
“The high-performance model in the new series from the Still powerhouse **accelerates, lifts and drives as powerfully as a diesel counterbalance truck, but without generating the high noise and exhaust emissions typical of combustion engines.**“

“If we look at its practical operational time, our test forklift lasts almost 1.5 working days on a single battery charge. **The operating time is theoretically unlimited if the lithium-ion battery is quickly recharged during breaks.**“

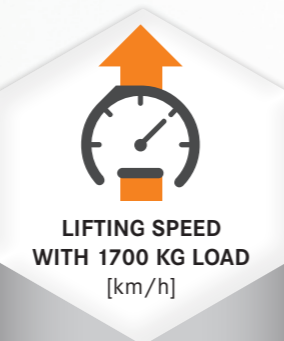
+14%
pallet turnover



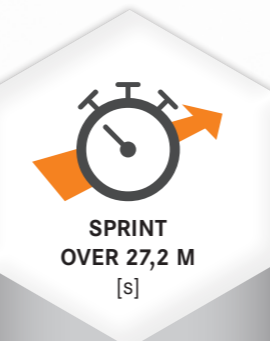
+38%
speed



+36%
faster lifting



+16%
acceleration



+121%
availability



The new RX 60 – breaking the performance barrier

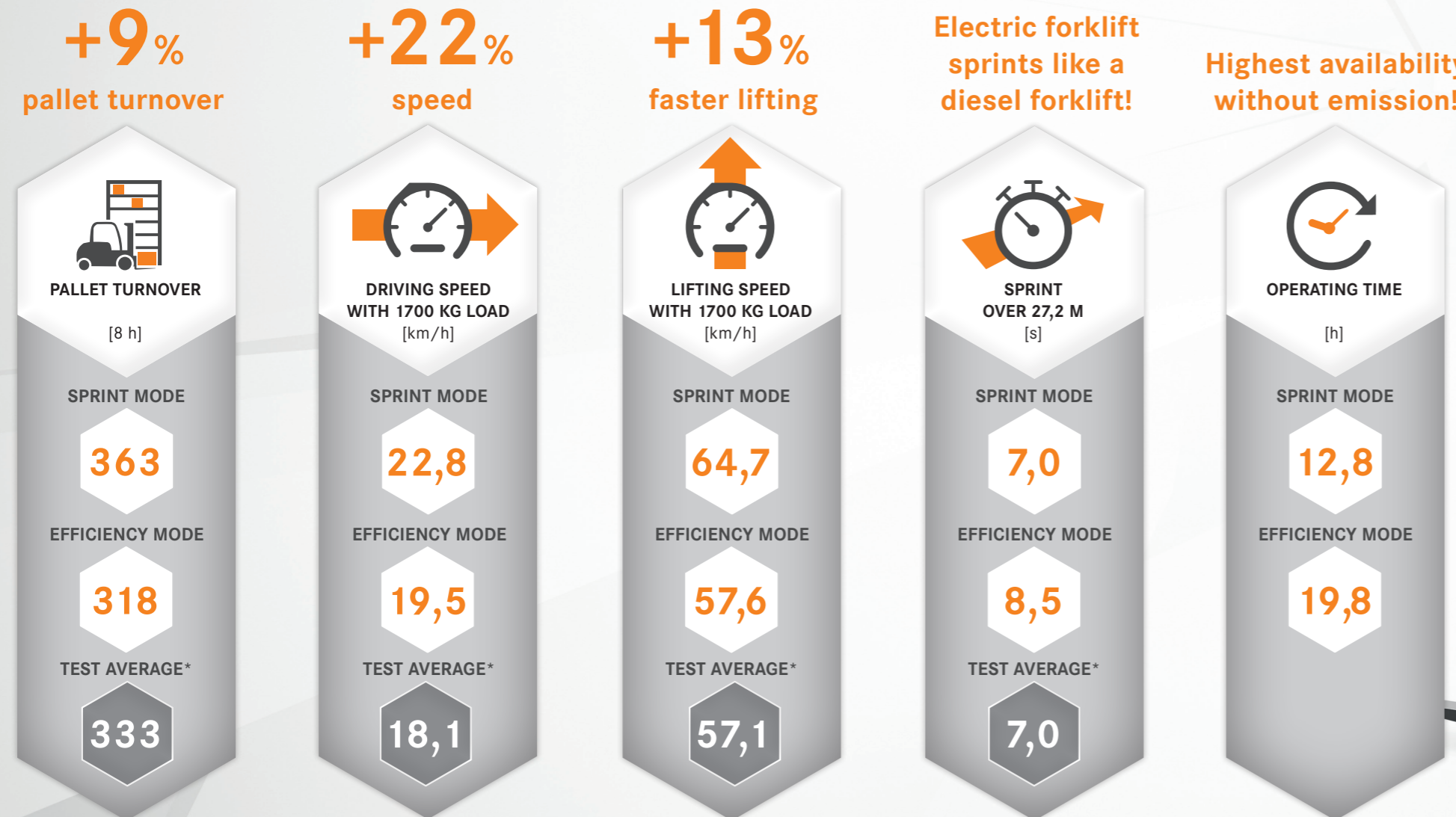
BEST IN CLASS FORKLIFT COMPARED TO DIESEL FORKLIFT TRUCKS



“Still is setting new standards in the electric counterbalance truck segment with the high-performance model in its RX60 series. **Never before in our long test history has a forklift with an electric drive been so productive.**“

“The high-performance model in the new series from the Still powerhouse **accelerates, lifts and drives as powerfully as a diesel counterbalance truck, but without generating the high noise and exhaust emissions typical of combustion engines.**“

“If we look at its practical operational time, our test forklift lasts almost 1.5 working days on a single battery charge. **The operating time is theoretically unlimited if the lithium-ion battery is quickly recharged during breaks.**“



independent forklift truck test - f+h magazin - STILL RX 60-25 - 11/2019 - www.logisticsinside.eu

* Average value of all tested 2.5 - 3.0 t diesel four-wheel forklift trucks

first in intralogistics

The new RX 60 – breaking the performance barrier

BEST IN CLASS FORKLIFT COMPARED TO LPG FORKLIFT TRUCKS



“Still is setting new standards in the electric counterbalance truck segment with the high-performance model in its RX60 series. **Never before in our long test history has a forklift with an electric drive been so productive.**“

“The high-performance model in the new series from the Still powerhouse **accelerates, lifts and drives as powerfully as a diesel counterbalance truck, but without generating the high noise and exhaust emissions typical of combustion engines.**“

“If we look at its practical operational time, our test forklift lasts almost 1.5 working days on a single battery charge. **The operating time is theoretically unlimited if the lithium-ion battery is quickly recharged during breaks.**“

+8%
pallet turnover

+18%
speed

+13%
faster lifting

Electric forklift sprints like a LPG forklift!

Highest availability without emission!

